



Water Spring MS

Media Center Collection Development Plan
2023-24

Brian Sanchez Corona

Brian Sanchez Corona (Sep 27, 2023 11:42 EDT)

Brian Sanchez Corona
Principal

Michelle Preiser

Michelle Preiser
Certified Educational Media Specialist

Table of Contents

Table of Contents	2
Executive Summary	3
District Strategic Plan 2025	3
School Collection Development Plan	3
School Assessment Analysis	4
Collection Analysis	5
Collection Analysis by Category	6
Notes	6
Representation Analysis	7
Results	7
Strategic Focus	8
Budget and Purchasing Plan	9
Annual Budget 2023-2024	9
Purchasing Plan 2023-2024	9
Year-to-Year Collection Change	10

Executive Summary

District Strategic Plan 2025

Orange County Public Schools is the eighth-largest school district in the United States and the fourth largest in Florida. The district serves more than 206,000 students at 202 schools and is one of the largest employers in Central Florida with more than 25,000 team members.

Vision: To ensure every student has a promising and successful future.

Mission: With the support of families and the community, we create enriching and diverse pathways to lead our students to success.

School Collection Development Plan

Water Spring MS serves 767 students enrolled in grades sixth through eighth. The student population's ethnicity is made of 50% Hispanic and 50% Non-Hispanic students. Additionally, we serve a diverse population made up of 85% White, 5% Black, 0% Native, 4% Asian, 1% Pacific, and 4% Multicultural students.

The administration includes Principal Brian Sanchez Corona, Assistant Principal Nicole Mutters, and Assistant Principal Arnetta Heidelberg. Water Spring MS is proud to offer many special programs which provide students with opportunities. These include band, drama, art, chorus, National Junior Honor Society, Debate, PLTW (STEM), SGA, Athletic Teams, Tutoring, Journalism/Yearbook, Peer Counseling, TV Production, Photography Club, Nintendo Club, and various other support clubs.

A thorough analysis of the current media center collection at Water Spring MS indicates that the average age of the collection is 2019 and the number of books per student is 11. The [American Association for School Libraries](#) has established a criteria for highly effective media centers that includes a ratio of 15-20 books available per student in the collection.

At this time, Water Spring MS does not meet the recommended standards for the number of books per student.

The analysis of the collection also revealed the following areas of strengths and concerns:

- ELA scores dropped in two grade levels so consideration should be given to titles that would support literacy growth. Civics scores also dropped by a small percentage, and as this test is mostly a reading test but at a higher level, including books with a higher lexile in our collection would benefit our students. Furthermore, we saw a decline in science scores; by including more up-to-date and relevant books about science we may see an improvement in this area. Finally, overall math scores within the school improved, for this reason we

should focus more on books that will assist in elevating the overall literacy of the students, which will improve scores in multiple subject areas.

- In addition to the physical media center collection, the district provides almost 5,000 eBooks, audiobooks, and digital magazines.
- We need to update outdated books regarding technology and science, which may improve related test scores.
- Our 6th and 7th grade reading scores are low and dropped from the previous year, therefore by adding higher level books to our collection we can expect books that might challenge them more and assist in their growth, as our current collection is an average of a 5th grade reading level.
- Our population is 50% Hispanic but we only have a 2.6% representation in our collection, therefore adding more Latinx representation in our collection needs to be a major priority.

School Assessment Analysis

The school assessment analysis provides an overview of the school's assessment data for the previous two school years.

Proficiency Data							
Assessment	2021-22	Assessment	2022-23	Assessment	2021-22	Assessment	2022-23
FSA ELA Grade 6	58%	FAST ELA Proficiency Grade 6	50%	FSA Math Grade 6	51%	FAST Math Proficiency Grade 6	78%
FSA ELA Grade 7	58%	FAST ELA Proficiency Grade 7	57%	FSA Math Grade 7	64%	FAST Math Proficiency Grade 7	35%
FSA ELA Grade 8	54%	FAST ELA Proficiency Grade 8	54%	FSA Math Grade 8	34%	FAST Math Proficiency Grade 8	67%
Civics EOC	80%	Civics EOC	78%	FSA Algebra 1 EOC	72%	BEST Algebra 1 EOC	89%
NGSSS Sci 8 EOC	59%	NGSSS Sci 8 EOC	54%	FSA Geometry EOC	88%	BEST Geometry EOC	100%

Comparison between 2021-22 and 2022-23 Testing Data

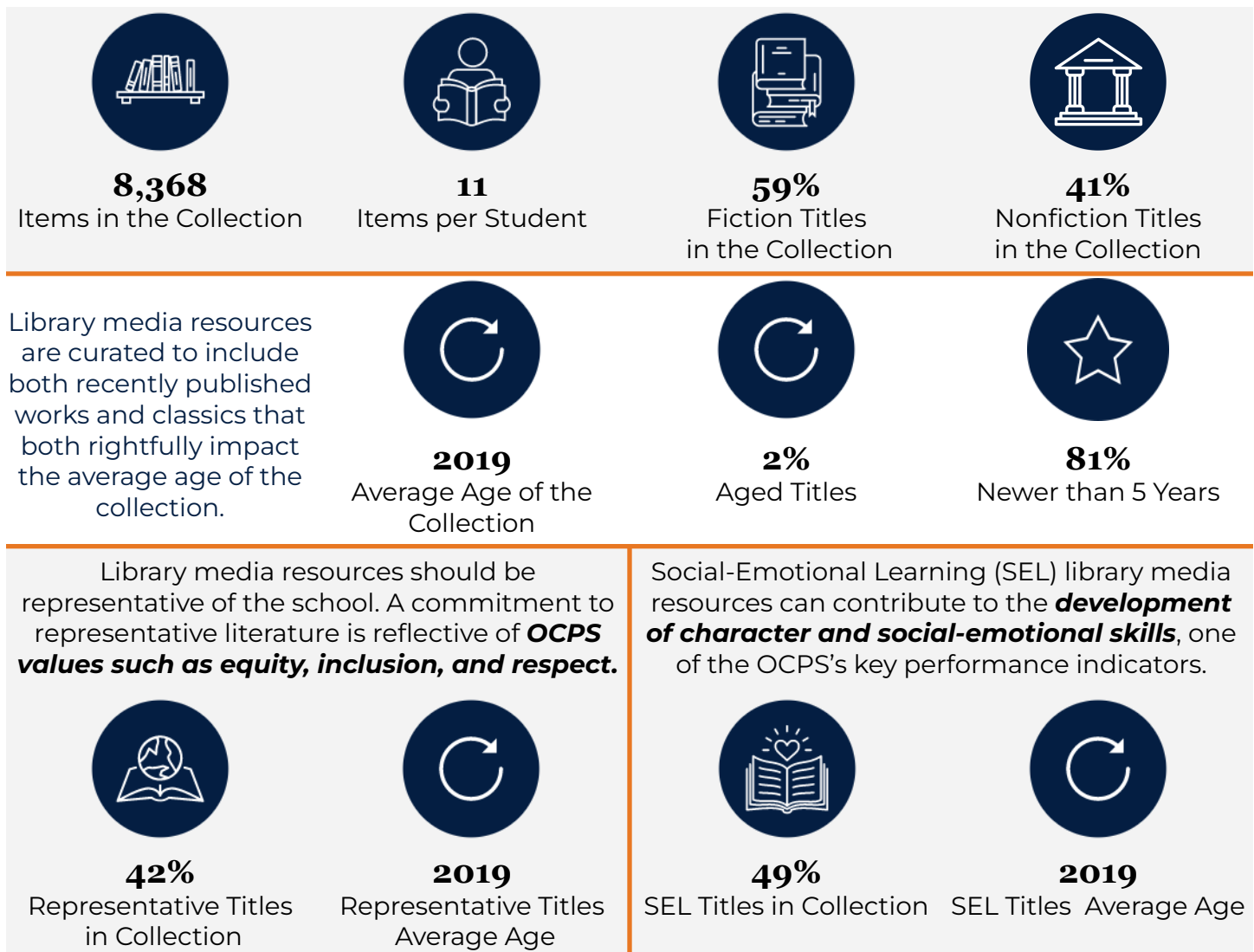
(adapted from <https://www.fldoe.org/accountability/assessments/k-12-student-assessment/results/2023.stml>)

In 2023, the state transitioned from Florida Standards Assessments (FSA) to Florida Assessment of Student Thinking (FAST) for English Language Arts (ELA) and Mathematics. The 2022-23 for FAST and Benchmarks for Excellent Student Thinking (B.E.S.T.) End-of-Course (EOC) assessments are based on **provisional** achievement level cuts that are linked to

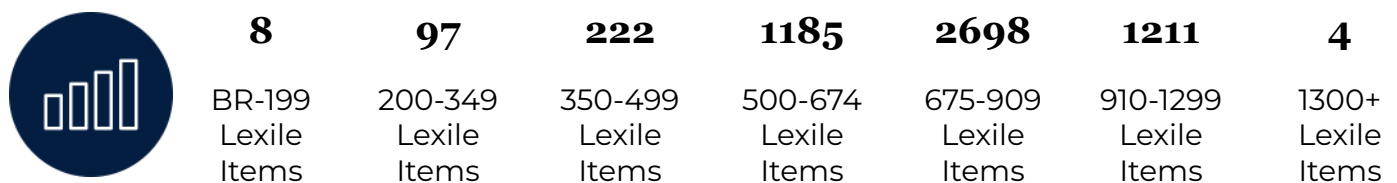
each assessment's respective 2021-22 reporting scale. Comparisons should not be made between the 2023 data and previous years' data.

Collection Analysis

The collection is developed for and influenced by students, their interests, academic needs and alignment to the curriculum. The data below is a snapshot of the collection based on a Titlewise Analysis from July 2023. Purchasing or weeding after that time is not reflected in this data.



Library media resources are distributed across the **Lexile reading level ranges** noted below.



Collection Analysis by Category

The information collected in this section provides a detailed look at the current library collection by classification and genre. The information was gathered from Follett Destiny, the library management system, and Titlewave, the vendor's ordering and analysis tool.

Section	# of Titles	Average Age
Computer Science, Information & General Works	75	2020
Philosophy & Psychology	56	2020
Religion	42	2015
Social Sciences	465	2020
Language	13	2017
Science	480	2020
Technology	398	2020
Arts & Recreation	452	2020
Literature	91	2015
History & Geography	441	2020
Biography	459	2020
College and Career	71	2020
Reference	22	2016
General Fiction	4460	2019
Graphic Novels	835	2019

Notes

- Reference is the oldest collection followed by Literature collection and religion collections
- Language collection is the smallest as this mostly contains bilingual dictionaries, which are used for testing purposes.
- Science and technology average age is 3 years old, so this will need weeding based on aged out information (16 books already need weeding)
- Average reading level in library is 5th grade; we need more books at a higher lexile/AR
- Since we are a new collection, the nonfiction section will be adjusted after the students have had opportunities to express their interests.

Representation Analysis

Enrollment & Demographic Data					
767 2023-24 Student Enrollment as of September 7, 2023	Subgroups		Federal Ethnicity		
	36% ELL	5% ESE	50% Hispanic	50% Non-Hispanic	
Federal Race Category					
85% White	5% Black	0% Native	4% Asian	1% Pacific	4% Multicultural

To deepen focus on strategic collection development, specific sections of the collection were analyzed in detail to determine whether the media center collection reflects and represents various points of view and experiences. The goal is to provide a balanced collection that can be both a mirror, to reflect a reader's experience, and a window, so readers can experience different viewpoints.

Results

Based on the available school data of Water Spring MS in comparison to Collection Analysis results, it was found that:

Student Representation	% of Students	Total # of Titles	Total % of Titles	Avg. Age of Titles
Hispanic	50%	217	2.6%	2019
Black	5%	424	5%	2019
Asian	4%	142	1.7%	2020

Strategic Focus

This page lists the priorities for selection and weeding for each school year and includes the action, updates, and outcomes. This is subject to change due to funding and time constraints.

School Year	Strategic Focus
<p>2023-2024</p>	<p>Selection Priorities</p> <ul style="list-style-type: none"> Strengthen collection to be more representative of our Latinx population, including books in their native language Expand collection to include higher lexile/AR levels to increase average reading levels to improve literacy school-wide Adjust collection to include more books based on student interests and requests
	<p>Weeding Priorities</p> <ul style="list-style-type: none"> Limited weeding for outdated non-fiction titles, paying particular attention to technology and science Limited weeding for books that are damaged beyond repair
<p>2024-2025</p>	<p>Selection Priorities</p> <ul style="list-style-type: none"> Continue to examine shifting demographics and include titles to match representation Continue to strengthen collection to be more representative of our Latinx population, including books in their native language Expand collection with remaining funds based on student and community interest and needs SSYRA Books for 2024-2025
	<p>Weeding Priorities</p> <ul style="list-style-type: none"> Remove outdated materials Review circulation statistics for weeding decisions Weed multiple copies of past SSYRA books and other duplicates

Budget and Purchasing Plan

This page outlines the current budget available and specifically lists the priorities for this school year (2023-2024).

Annual Budget 2023-2024

State Funds	
<i>Source</i>	<i>Amount</i>
State (1001111000)	7,365.66
Accounts	
<i>Source</i>	<i>Amount</i>
Internal funds (IDs)	15.00
Internal Funds (Lost books)	33.02
Grants or Donations	TBD
Fundraisers TBD	TBD
TOTAL	7,413.68

Purchasing Plan 2023-2024

Approximate Purchasing Plan	
<i>Purpose</i>	<i>Amount</i>
Books representative of Latinx population	\$4,000
Higher Lexile Books	\$2,000
Books based on Student interests and requests	\$1,000
Books to update nonfiction science/technology	\$300
Library supplies and incentives	TBD from Fundraiser
TOTAL	\$7,300

Year-to-Year Collection Change

The information below represents the year-to-year change within the library media center collection from the 2022-23 to 2023-24 school year. The 2022-23 data is based on a collection analysis from June 2022, while the 2023-24 is based on a collection analysis from July 2023.

Data Reflection

- Moved from sharing a building with Horizon High School for two years to our own brand new building this school year
- Due to new collection development funds, we were able to expand exponentially on our collection, adding 5,467 brand new books to our library
- No books had to be weeded due to having a small collection prior to the move and being within the correct age.





2022-23 Purchased and Weeded Materials

Materials
Added to the
Collection

5,467

Materials
Weeded from
the Collection

0

Category	2022-23	2023-24
 Items in the Collection	2901	8368
 Items per Student	4	11
 Average Age of Collection	2018	2019
 Representative Titles in the Collection	46%	42%